

# Lake Minnetonka

Hennepin County, Minnesota  
May 2011

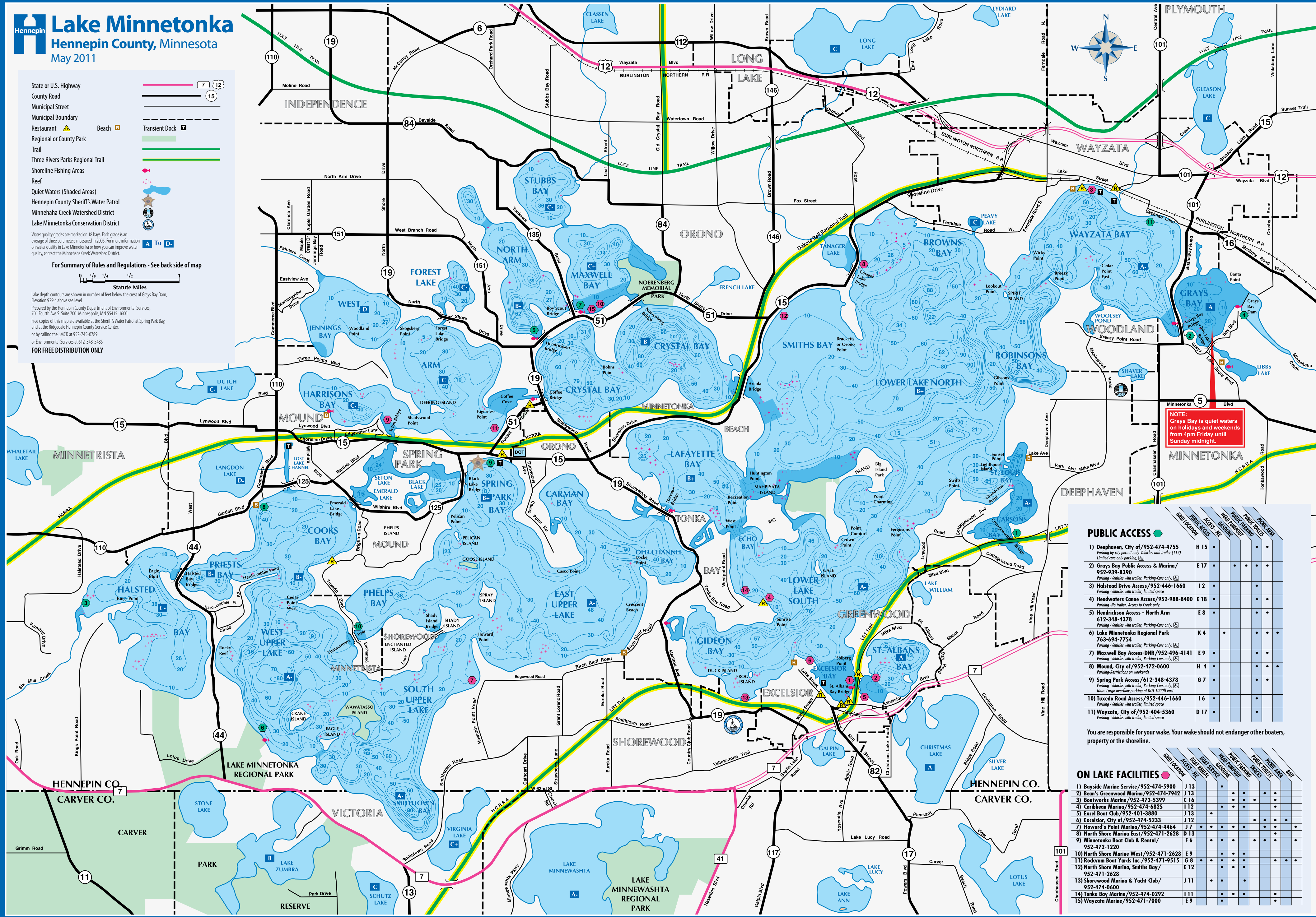
State or U.S. Highway  
County Road  
Municipal Street  
Municipal Boundary  
Restaurant  
Regional or County Park  
Trail  
Three Rivers Parks Regional Trail  
Shoreline Fishing Areas  
Reef  
Quiet Waters (Shaded Areas)  
Hennepin County Sheriff's Water Patrol  
Minnehaha Creek Watershed District  
Lake Minnetonka Conservation District

Water quality grades are marked on 10 bays. Each grade is an average of three parameters measured in 2005. For more information on water quality in Lake Minnetonka or how you can improve water quality, contact the Minnehaha Creek Watershed District.

For Summary of Rules and Regulations - See back side of map

Statute Miles

Lake depth contours are shown in number of feet below the crest of Grays Bay Dam, Elevation 529.4 above sea level.  
Prepared by the Hennepin County Department of Environmental Services, 701 Fourth Ave S, Suite 700, Minneapolis, MN 55415-1600  
Free copies of this map are available at the Sheriff's Water Patrol at Spring Park Bay, and at the Ridgeland-Hennepin County Service Center, or by calling the LMC at 952-945-0789 or Environmental Services at 612-348-5485  
**FOR FREE DISTRIBUTION ONLY**



**NOTE:**  
Grays Bay is quiet waters on Fridays and weekends from 4pm Friday until Sunday midnight.

### PUBLIC ACCESS

1) Deephaven, City of/952-474-4755	H 15						
2) Grays Bay Public Access & Marina/952-939-8390	E 17						
3) Halsted Drive Access/952-446-1660	I 2						
4) Headwaters Canoe Access/952-988-8400	E 18						
5) Hendrickson Access - North Arm 612-348-4378	E 8						
6) Lake Minnetonka Regional Park 763-694-7754	K 4						
7) Maxwell Bay Access-DNR/952-496-4141	E 9						
8) Mound, City of/952-472-0600	H 4						
9) Spring Park Access/612-348-4378	G 7						
10) Tuxedo Road Access/952-446-1660	I 6						
11) Wayzata, City of/952-404-5360	D 17						

You are responsible for your wake. Your wake should not endanger other boaters, property or the shoreline.

### ON LAKE FACILITIES

1) Bayside Marine Service/952-474-5900	J 13						
2) Bean's Greenwood Marina/952-474-7942	J 13						
3) Boatworks Marina/952-473-5399	C 16						
4) Caribbean Marina/952-474-6825	I 12						
5) Excel Boat Club/952-401-3880	J 13						
6) Excelsior, City of/952-474-5233	J 12						
7) Howard's Point Marina/952-474-4464	J 7						
8) North Shore Marina East/952-471-2628	D 13						
9) Minnetonka Boat Club & Rental/952-472-1229	F 6						
10) North Shore Marina West/952-471-2628	E 9						
11) Rockvorn Boat Yards Inc./952-471-9515	G 8						
12) North Shore Marina, Smiths Bay/952-471-2628	E 12						
13) Shorewood Marina & Yacht Club/952-474-0600	J 11						
14) Tonka Bay Marina/952-474-0292	I 11						
15) Wayzata Marine/952-471-7000	E 9						



Hennepin County Sheriff's Water Patrol maintains safety on the waterways.

Minnetonka Yacht Club catboat ca. 1891 courtesy of the Excelsior-Lake Minnetonka Historical Society.

As you enjoy the lake, remembering Lake Minnetonka's history can inform, inspire and offer a new perspective. To learn more about Lake Minnetonka - or "Big Water" - visit [www.lmhs.org](http://www.lmhs.org) or other available historical resources.

Hennepin  
Lake Minnetonka 2011  
Map



Printed on Recycled Paper  
CONTAINS SOYOL

THIS MAP NOT INTENDED FOR NAVIGATION

Hennepin County  
Environmental Services  
www.hennepin.us/environment  
612-348-3777

Lake Minnetonka  
Conservation District  
www.lmcd.org  
1838 Minnetonka Blvd  
Deephaven, MN 55391  
952-745-0789

Hennepin County Sheriff's Water Patrol  
www.waterpatrol.org  
4141 Shoreline Dr.  
Spring Park, MN 55384  
612-596-9880

